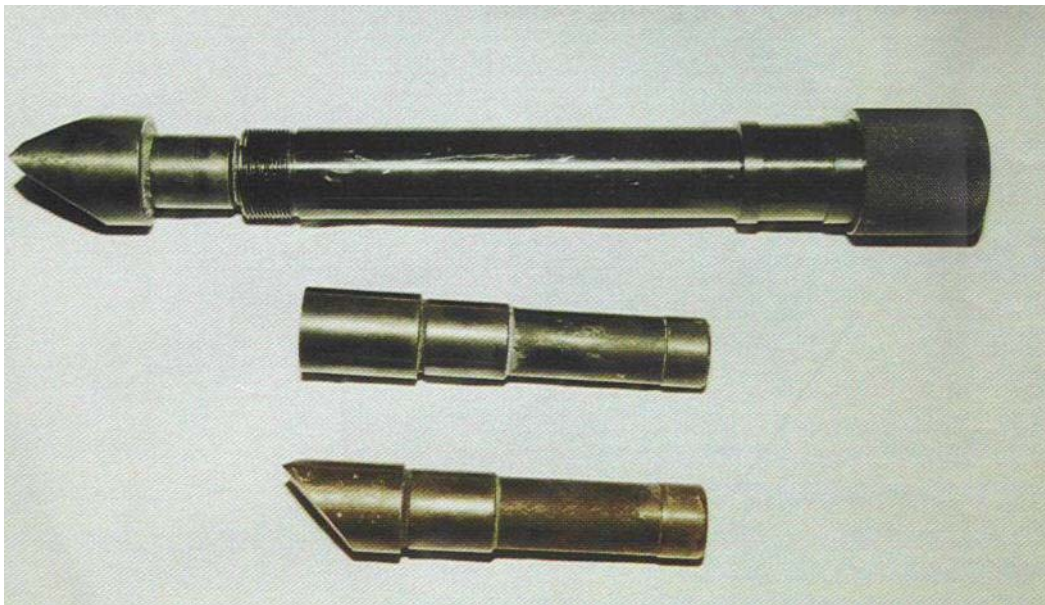


Steel bolts SB01, SB02, SB03

Art.No. 0201104/05/06



Technical Specification:

The steel bolts SB01, SB02 and SB03 are used for disruption of the improvised explosive devices (IED), fuses or artillery and mortar ammunition, as well as locks and padlocks on wooden and steel doors.

TECHNICAL DATA

<u>Bolt type</u>	<u>Weight</u>	<u>Length</u>	<u>Dia.</u>	<u>Shape</u>	<u>Largest dim.</u>
BS01	750 g	137 mm	27 mm	Cutter 90	48 mm
BS02	575 g	150 mm	27 mm	Cutter 75	30 mm
BS03	590 g	140 mm	27 mm	Flat	30 mm

DESCRIPTION

The steel bolts are made of tempered tool steel. Different points are used according to the object which is to be disrupted. The bolts are launched from the CR-02 barrel, fixed on the universal adjustable mount of the water disrupter. The pressure is provided by the electrically-fired cartridge NVR-29 which is offered in three different power grades:

- LP 15g of black powder
- MP 20 g of black powder
- HP 30 g of black powder